

## Report on Development of Clinical Techniques Teaching Labs and Clinics

### Overview:

Representatives from The European Council of Optometry and Optics visited Hadassah Academic College (HAC) and Bar Ilan University (BIU) in Israel, and Manipal Academy of Higher Education (MAHE), University of Hyderabad (UOH) and Chitkara University (CU). At the visits they toured the facilities including labs and clinics. Based on the results of this visit, they made specific recommendations regarding the equipment each HEI needed to achieve European Diploma Accreditation. This report describes the purchase of equipment at each HEI based on the Recommendation.

### Bar Ilan University: BIU

The following equipment was purchased with the help of Erasmus Plus Oculus Project for the Optometry clinics and labs at the Dept. of Optometry, Bar Ilan University

Fundus/retina Camera



Visual Fields/perimeter:



**Hadassah Academic College:**

The following equipment was purchased with the help of Erasmus Plus Oculus Project for the Optometry clinics and labs at the Dept. of Optometry, Hadassah Academic College

Fundus/retina Camera



Visual Fields/perimeter:



OCT:



**University of Hyderabad:**

The following equipment has been procured with the help of Erasmus Plus Oculus Project for the Optometry labs at the School of Medical Sciences, University of Hyderabad, Hyderabad.



Ophthalmic chair unit and slit lamp biomicroscopy



3netra fundus retinal camera



Oculus 5M keratographer



Slit-lamp biomicroscope





Anterior eye Imaging system



Octopus visual fields

Chitkara University:

Sl.NO.	Equipment	Function	Outcome
1	Grand Seiko Refractometer Model GR2200 with standard accessories	To teach students Objective Refraction	90 students of 2 <sup>nd</sup> and 1 <sup>st</sup> year optometry students had practiced
2	Topcon slit-lamp SLD2 with imaging system	To teach students Evaluation of anterior segment, to learn different ocular pathologies	90 students of 2 <sup>nd</sup> and 1 <sup>st</sup> year optometry had used slit lamp, with imaging system students understanding was better.
3	Trial set (BALIWALA)	To teach Subjective refraction	45 students of 2 <sup>nd</sup> year optometry had used trial set for practicing subjective refraction.
4	Topcon slit lamp 3 STEP SL2G	To teach students Evaluation of anterior segment, to learn different ocular pathologies	45 students of 2 <sup>nd</sup> year optometry had practiced Slit Lamp.
5	Binocular vision equipment's BERNELL	To teach students Binocular vision assessment	45 students of 3 <sup>rd</sup> year optometry had used Binocular



			vision equipment's BERNELL kit for Binocular vision assessment.
--	--	--	---

6	Volk 20 D	To teach students Fundus evaluation and understanding of normal retina	45 students of 3 <sup>rd</sup> year optometry had practice fundus evaluation
7	Welch allyn indirect ophthalmoscope Model 12500D	To teach students Fundus evaluation and understanding of normal retina	45 students of 3 <sup>rd</sup> year optometry had practice fundus evaluation
8	Welch allyn combo ophthalmoscope And retinoscope 18342	To teach students Objective refraction and un-dilated fundus evaluation	45 students of 2 <sup>nd</sup> year optometry had practiced Refraction and fundus evaluation
9	Keeler indirect ophthalmoscope With video imaging system	To teach students Fundus evaluation and understanding of normal retina	90 students of 2 <sup>nd</sup> and 3 <sup>rd</sup> year optometry Due to video magnifier students understanding was better.
10	Keratometer (B & L)	To teach students Corneal curvature measurements.	90 students of 2 <sup>nd</sup> and 3 <sup>rd</sup> year optometry had used keratometer in

			different level for practicing.
11	MANUAL Lensometer DOUBLE TARGET	To teach students how to find out present glass prescription	90 students of 2nd and 1st year optometry had used lensometer

12	Digital vision acuity chart	To teach students evaluation of visual acuity	90 students of 2nd and 1st year optometry had used visual acuity chart
13	Applanation tonometer (KAT)	To teach students applanation technique of evaluating Intraocular pressure	90 students of 2nd and 1st year optometry had practiced IOP measurement with Applanation tonometer
14	Low vision kit	To teach students how to use Low vision assessment	45 students of 3 <sup>rd</sup> year optometry had used Low vision assessment kit for understanding of various optical devices.
15	Dispensing kit	To teach students fitting and dispensing of glasses	45 students of 2 <sup>nd</sup> year optometry had used dispensing kit for practicing fitting of glasses

## **1- GRAND SEIKO REFRACTOMETERMODEL GR2200**



## **2- TOPCON SLIT-LAMP SLD2 WITH IMAGING SYSTEM**



### **3-TRIAL SET (BALIWALA)**



### **4-TOPCON SLIT STEP SL2G**

### **LAMP 3**



## 5-BINOCULAR VISION EQUIPMENT'S BERNELL



## 6-VOLK 20 D



#### **7-WELCH ALLYN INDIRECT OPHTHALMOSCOPEMODEL 12500D**



#### **8- WELCH ALLYN COMBO OPHTHALMOSCOPE AND RETINOSCOPE 18342**





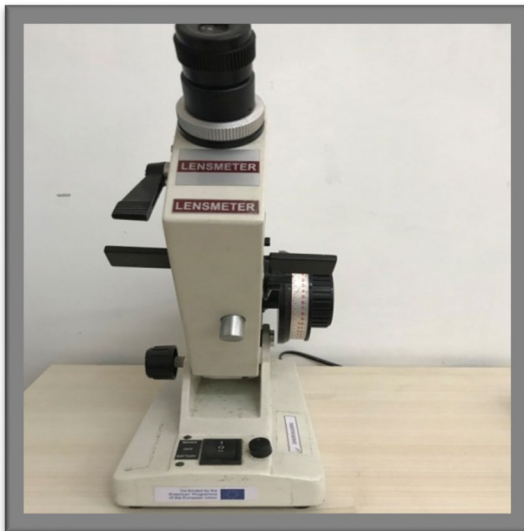
### **9-KEELER INDIRECT OPHTHALMOSCOPE WITH VIDEO IMAGING SYSTEM**



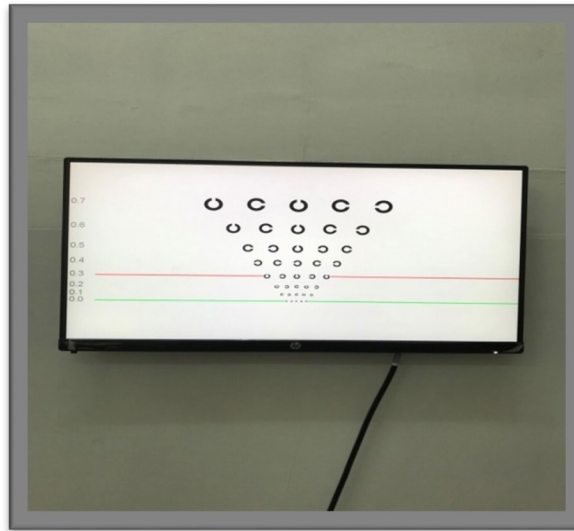
### **10- KERATOMETER (B &L)**



## 11-MANUAL LENSOMETER DOUBLE TARGET



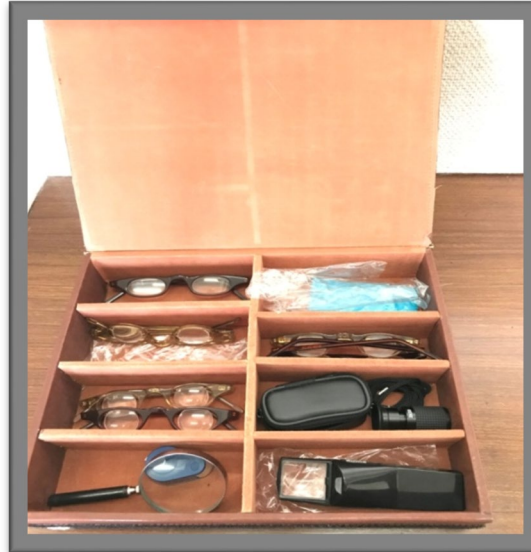
## 12-DIGITAL VISION ACUITY CHART



### 13-APPLANATION TONOMETER (KAT)



### 14- LOW VISION KIT



## 15- DISPENSING KIT

